

Features

Applications

- Unbelievable Audio Performance
- High Power Capacity
- Wide and Even Dispersion
- Very Wide Frequency Response
- Ready to Install
- Grille Included

- Corporations
- A-V Theaters & Surround Sound
- Schools & Universities
- Government Installations
- Retail Establishments



8081-CSD

| | |
|---------------------------|----------------------------|
| Frequency Response | 48-20,000 HZ +/- 3db |
| Sensitivity | 92 db 1w/1m |
| Power, Watts | 50 RMS 100 Program |
| Impedance | 8 Ohms |
| Woofer | 8"/1.5" v.c. |
| Tweeter | 1" Titanium Dome |
| Tuning | 10" passive radiator |
| Dimensions HxWxD | 23.625" x 23.625" x 10" |
| Weight | 24lbs |



8081-CSDHP

| | |
|---------------------------|---------------------------------|
| Frequency Response | 48-20,000 HZ +/- 3db |
| Sensitivity | 93 db 1w/1m |
| Power, Watts | 125 RMS 200 Program |
| Impedance | 8 Ohms |
| Woofer | 8"/1.5" v.c. Cast frame |
| Tweeter | 25mm horn loaded Fabric Dome |
| Tuning | 10" passive radiator |
| Dimensions HxWxD | 23.625" x 23.625" x 10" |
| Weight | 28lbs |



12-1C

| | |
|---------------------------|----------------------------|
| Frequency Response | 40-250 HZ +/- 3db |
| Sensitivity | 93 db 1w/1m |
| Power, Watts | 150 RMS 290 Program |
| Impedance | 8 Ohms |
| Woofer | 12"/2" v.c. |
| Tuning | Optimally Vented |
| Dimensions HxWxD | 23.625" x 23.625" x 10" |
| Weight | 32lbs |



6061-CS

| | |
|---------------------------|---------------------------|
| Frequency Response | 50-20,000 HZ +/- 3db |
| Sensitivity | 91 db 1w/1m |
| Power, Watts | 50 RMS 100 Program |
| Impedance | 8 Ohms |
| Woofer | 6.5"/1.5" v.c. |
| Tweeter | 1" Titanium Dome |
| Tuning | 8" passive radiator |
| Dimensions HxWxD | 23.625" x 23.625" x 4" |
| Weight | 21lbs |



8081-CS

| | |
|---------------------------|-----------------------------|
| Frequency Response | 48-20,000 HZ +/- 3db |
| Sensitivity | 92 db 1w/1m |
| Power, watts | 50 RMS 100 Program |
| Impedance | 8 Ohms |
| Woofer | 8"/1.5" v.c. |
| Tweeter | 1" Titanium Dome |
| Tuning | 10" passive radiator |
| Dimensions HxWxD | 23.625" x 23.625" x 5.5" |
| Weight | 24lbs |



8081-CSHP

| | |
|---------------------------|---------------------------------|
| Frequency Response | 45-20,000 HZ +/- 3db |
| Sensitivity | 93 db 1w/1m |
| Power, Watts | 125 RMS 200 Program |
| Impedance | 8 Ohms |
| Woofer | 8"/1.5" v.c. Cast frame |
| Tweeter | 25mm horn loaded Fabric Dome |
| Tuning | 10" passive radiator |
| Dimensions HxWxD | 23.625" x 23.625" x 5.5" |
| Weight | 28lbs |

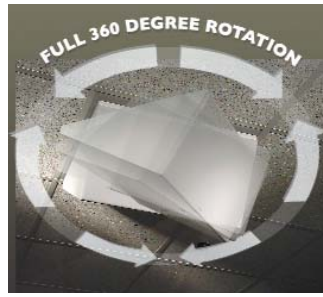
KSI 2x2 Ceiling Mount Loudspeakers

SERIES III



6061-CSD

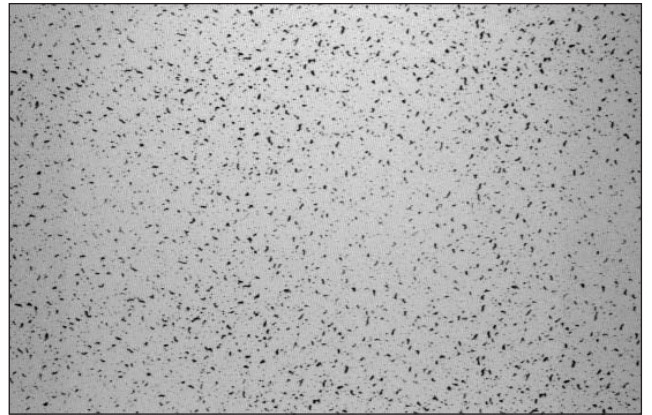
| | |
|---------------------------|-------------------------|
| Frequency Response | 50-20,000 HZ +/- 3db |
| Sensitivity | 91 db 1w/1m |
| Power, Watts | 50 RMS 100 Program |
| Impedance | 8 Ohms |
| Woofer | 6.5"/1.5" v.c. |
| Tweeter | 1" Titanium Dome |
| Tuning | 8" passive radiator |
| Dimensions HxWxD | 23.625" x 23.625" x 8" |
| Weight | 23lbs |



8081-CSD-SW

| | |
|---------------------------|-------------------------|
| Frequency Response | 48-20,000 HZ +/- 3db |
| Sensitivity | 92 db 1w/1m |
| Power, Watts | 50 RMS 100 Program |
| Impedance | 8 Ohms |
| Woofer | 8"/1.5" v.c. |
| Tweeter | 1" Titanium Dome |
| Tuning | 10" passive radiator |
| Dimensions HxWxD | 23.625" x 23.625" x 10" |
| Weight | 26lbs |

PATTERNED GRILLE



KSI now offers our CS series of ceiling loudspeakers in a patterned grille to blend in with your ceiling tiles.

The patterned grille is offered as a optional item that may be ordered with the purchase of a loudspeaker or ordered as a new grille for existing installations.

Our standard patterned grille blends with Armstrong tile number 948.



101-CSHP

| | |
|---------------------------|---------------------------------|
| Frequency Response | 42-20,000 HZ +/- 3db |
| Sensitivity | 94 db 1w/1m |
| Power, Watts | 125 RMS 200 Program |
| Impedance | 8 Ohms |
| Woofer | 10"/2" v.c. Cast frame |
| Tweeter | 25mm horn loaded Fabric Dome |
| Tuning | Optimally Vented |
| Dimensions HxWxD | 23.625" x 23.625" x 7" |
| Weight | 30lbs |



801-C

| | |
|---------------------------|--------------------------|
| Frequency Response | 55-20,000 HZ +/- 4db |
| Sensitivity | 92 db 1w/1m |
| Power, watts | 40 RMS 80 Program |
| Impedance | 8 Ohms |
| Woofer | 8"/1" v.c. |
| Tweeter | 1" Mylar Dome |
| Tuning | none |
| Dimensions HxWxD | 23.625" x 23.625" x 3.5" |
| Weight | 12lbs |



Can you find the KSI patterned grille?

Please note: KSI patterned CS loudspeaker grilles are designed to blend with existing patterned ceiling tiles. Existing ceiling tiles you may have may have discoloration, dirt, fading, different batches or other signs of age. Therefore, no guarantee can be made that an exact match will occur.



FIRE Retardant

All Series III ceiling loudspeakers are also available fabricated from UL listed fire retardant particle board. Typical lead time for KSI's FR loudspeakers is 1 week.

www.ksipro.com

Features

Applications

- Unbelievable Audio Performance
- High Power Capacity
- Wide and Even Dispersion
- Ready to Install
- Wall and Ceiling Mount
- Grille Included

- Corporations
- A-V Theaters & Surround Sound
- Schools & Universities
- Government Installations
- Residential Installations



501-WM

| | |
|---------------------------|----------------------|
| Frequency Response | 60-20,000 HZ +/- 4db |
| Sensitivity | 90 db 1w/1m |
| Power, Watts | 50 RMS 90 Program |
| Impedance | 8 Ohms |
| Woofer | 5.25"/1.25" v.c. |
| Tweeter | 1" Titanium Dome |
| Dimensions HxWxD | 11.5" x 7.5" x 2.5" |
| Weight | 4lbs |



601-WM

| | |
|---------------------------|-----------------------|
| Frequency Response | 55-20,000 HZ +/- 4db |
| Sensitivity | 91 db 1w/1m |
| Power, Watts | 50 RMS 100 Program |
| Impedance | 8 Ohms |
| Woofer | 6.5"/1.5" v.c. |
| Tweeter | 1" Titanium Dome |
| Dimensions HxWxD | 13.5" x 8.5" x 2.5" |
| Weight | 5lbs |



501-WMBB

| | |
|---------------------------|---------------------------------|
| Frequency Response | 55-20,000 HZ +/- 3db |
| Sensitivity | 90 db 1w/1m |
| Power, Watts | 50 RMS 90 Program |
| Impedance | 8 Ohms |
| Woofer | 5.25"/1.25" v.c. |
| Tweeter | 1" Titanium Dome |
| Tuning | 8" passive radiator |
| Backbox Grille | 22.5" x 14" x 3.5" 18" x 10" |
| Weight | 21lbs |



601-WMBB

| | |
|---------------------------|-------------------------------|
| Frequency Response | 50-20,000 HZ +/- 3db |
| Sensitivity | 91 db 1w/1m |
| Power, Watts | 50 RMS 100 Program |
| Impedance | 8 Ohms |
| Woofer | 6.5"/1.5" v.c. |
| Tweeter | 1" Titanium Dome |
| Tuning | 8" passive radiator |
| Backbox Grille | 26" x 14" x 3.5" 21" x 10" |
| Weight | 24lbs |



801-WMBB

| | |
|---------------------------|-----------------------------------|
| Frequency Response | 48-20,000 HZ +/- 3db |
| Sensitivity | 92 db 1w/1m |
| Power, Watts | 50 RMS 100 Program |
| Impedance | 8 Ohms |
| Woofer | 8"/1.5" v.c. |
| Tweeter | 1" Titanium Dome |
| Tuning | 10" passive radiator |
| Backbox Grille | 32" x 14" x 5.5" 24.5" x 12.5" |
| Weight | 28lbs |

KSI Wall & Ceiling Mount Loudspeakers

SERIES III



801-WM

| | |
|---------------------------|-------------------------|
| Frequency Response | 50-20,000 HZ +/- 4db |
| Sensitivity | 92 db 1w/1m |
| Power, Watts | 50 RMS 100 Program |
| Impedance | 8 Ohms |
| Woofer | 8"/1.5" v.c. |
| Tweeter | 1" Titanium Dome |
| Dimensions HxWxD | 15.5" x 10.5" x 3.5" |
| Weight | 7lbs |



811-WM

| | |
|---------------------------|---------------------------------|
| Frequency Response | 45-20,000 HZ +/- 4db |
| Sensitivity | 93 db 1w/1m |
| Power, watts | 125 RMS 200 Program |
| Impedance | 8 Ohms |
| Woofer | 8"/1.5" v.c. Cast Frame |
| Tweeter | 25mm Horn Loaded Fabric Dome |
| Dimensions HxWxD | 15.5" x 10.5" x 3.5" |
| Weight | 12lbs |



See page 9 for transformers to be used with premium distributed systems.



811-WMBB

| | |
|---------------------------|-----------------------------------|
| Frequency Response | 45-20,000 HZ +/- 3db |
| Sensitivity | 93 db 1w/1m |
| Power, Watts | 125 RMS 200 Program |
| Impedance | 8 Ohms |
| Woofer | 8"/1.5" v.c. Cast frame |
| Tweeter | 25mm horn loaded Fabric Dome |
| Tuning | 10" passive radiator |
| Backbox Grille | 32" x 14" x 5.5" 24.5" x 12.5" |
| Weight | 28lbs |



811-SBWM

| | |
|---------------------------|-----------------------------------|
| Frequency Response | 40-500 HZ +/- 3db |
| Sensitivity | 93 db 1w/1m |
| Power, Watts | 125 RMS 200 Program |
| Impedance | 8 Ohms |
| Woofer | 8"/2" v.c. Cast frame |
| Tweeter | None |
| Tuning | 10" passive radiator |
| Backbox Grille | 32" x 14" x 5.5" 24.5" x 12.5" |
| Weight | 27lbs |



FIRE Retardant

All Series III ceiling loudspeakers are also available fabricated from UL listed fire retardant particle board. Typical lead time for KSI's FR loudspeakers is 1 week.

Unsure about how to design your system?

Call us, we'll help you design the system that is right for your environment.

KSI High Fidelity Near Field Loudspeakers

SERIES III

Features
Applications

- Accurate Reproduction
- Wide and Even Dispersion
- Fully Shielded on the 501-SH
- Cost Effective
- Free Standing — Plug in and enjoy!
- Gold Plated Dual Binding Posts

- Foreground Music Systems
- Corporate Board Rooms
- Government Installations
- Houses of Worship
- Hotels & Airports
- Home Theater Systems



Our wall mount brackets make mounting any of our near field loudspeakers fast and safe. They may be ordered pre-mounted or may be mounted in the field.



501-SH

| | |
|---------------------------|-------------------------|
| Frequency Response | 55-20,000 HZ +/- 3db |
| Sensitivity | 90 db 1w/1m |
| Power Watts | 50 RMS 90 Program |
| Impedance | 8 Ohms |
| Woofer | 5.25"/1.25" v.c. |
| Tweeter | 1" Titanium Dome |
| Tuning | 8" passive radiator |
| Dimensions HxWxD | 18" x 8.5" x 7.5" |
| Weight | 14lbs |



601

| | |
|---------------------------|-------------------------|
| Frequency Response | 50-20,000 HZ +/- 3db |
| Sensitivity | 91 db 1w/1m |
| Power Watts | 50 RMS 90 Program |
| Impedance | 8 Ohms |
| Woofer | 6.5"/1.5" v.c. |
| Tweeter | 1" Titanium Dome |
| Tuning | 8" passive radiator |
| Dimensions HxWxD | 19.5" x 8.5" x 8" |
| Weight | 16lbs |



801

| | |
|---------------------------|-------------------------|
| Frequency Response | 48-20,000 HZ +/- 3db |
| Sensitivity | 92 db 1w/1m |
| Power Watts | 50 RMS 100 Program |
| Impedance | 8 Ohms |
| Woofer | 8"/1.5" v.c. |
| Tweeter | 1" Titanium Dome |
| Tuning | 10" passive radiator |
| Dimensions HxWxD | 23" x 11" x 10" |
| Weight | 24lbs |



811-HP

| | |
|---------------------------|---------------------------------|
| Frequency Response | 45-20,000 HZ +/- 3db |
| Sensitivity | 93 db 1w/1m |
| Power, Watts | 125 RMS 200 Program |
| Impedance | 8 Ohms |
| Woofer | 8"/1.5" v.c. cast frame |
| Tweeter | 25mm horn loaded fabric dome |
| Tuning | 10" passive radiator |
| Dimensions HxWxD | 23" x 11" x 10" |
| Weight | 28lbs |

KSI Loudspeaker Installation

INSTALLATION OF MODELS C, CS & CSHP



Remove two ceiling tiles.



Place the grille into the first opening.



Screw on the supplied hooks.



Slide the loudspeaker onto the grille.



Wire the loudspeaker and connect to the structure above. See Note.



Replace the second tile.

INSTALLATION OF MODELS CSD & CSDHP



Remove two ceiling tiles.



Screw on the supplied hooks.



Slide the loudspeaker through the opening. Make sure that it fits flush.



Wire the loudspeaker and connect to the structure above. See Note.



Snap on the grille and replace the second tile.

INSTALLATION OF RETROFIT MODELS WITH KSI CONTINUOUS COMPRESSION CLAMPS



Tape the template to the desired area. Cut the drywall for the selected model.



Fish the wire and add fiberglass.



Wire the loudspeaker. See Note.



Slip the loudspeaker into the opening.

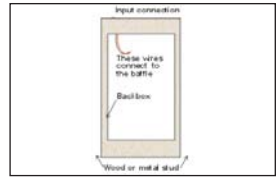


Tighten the clamps.

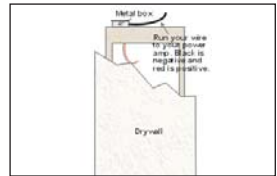


Snap on the grille.

INSTALLATION OF PRECONSTRUCTION MODELS WITH SEALED BACK BOXES



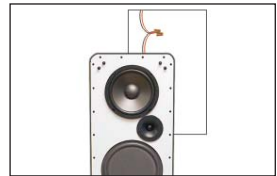
Mount the backbox between 2 studs. 16" on center.



Use a metal box and make the wire connection to the backbox. You can drywall over the backbox.



Cut the opening in the drywall to expose the backbox.



Holding the baffle, use the wire nuts to connect the baffle to the internal wires.



Screw the baffle into the backbox.



Snap on the grille.

NOTE: You must make certain that electrical connections meet all local codes. Make absolutely sure that the loudspeaker is securely attached to the grid and structure above.

Features

- Premium Audio Performance
- Wide Frequency Response
- Very Low Insertion Loss
- Up to 100 watts
- A Must for KSI Loudspeakers

KSI audio transformers are designed for use in 70.7 volt distributed sound systems. Heavy steel cores assure very low distortion and wide frequency response. This is essential, as our transformers will not degrade the high performance found in all KSI loudspeakers. Compared to small cheap transformers from other manufactures, KSI transformers are of consistent and high quality, providing you with top audio performance for all of your distributed sound systems. Our ELT series provides exceptional performance by offering extended low frequency response.

The response over the entire range only varies by only 1 db!! KSI offers a full selection of sizes for any installation.

| TRANSFORMER SPECIFICATIONS | | | | |
|--|----------|-----------|----------|-----------|
| 70 Volt line standard transformers | | | | |
| T70-8 | T70-15 | T70-30 | T70-60 | T70-100 |
| 70 Volt line extended low transformers | | | | |
| ELT70-8 | ELT70-15 | ELT70-30 | ELT70-60 | |
| <i>All extended low frequency transformers are special order only.</i> | | | | |
| Primary Taps Watts | | | | |
| 2,4,8 | 5,10,15 | 7.5,15,30 | 15,30,60 | 25,50,100 |
| Frequency response | | | | |
| T series/ 50-15000 Hz +/- 3db | | | | |
| ELT series/ 30-15000 Hz +/- 1db | | | | |
| Insertion loss | | | | |
| All transformers .5db | | | | |
| Secondary impedance | | | | |
| All transformers 4 & 8 ohms | | | | |

