

# Features

# Applications

- Unbelievable Audio Performance
- High Power Capacity
- Wide and Even Dispersion
- Very Wide Frequency Response
- Ready to Install
- Grille Included

- Corporations
- A-V Theaters & Surround Sound
- Schools & Universities
- Government Installations
- Retail Establishments



**8081-CSD**

<b>Frequency Response</b>	48-20,000 HZ +/- 3db
<b>Sensitivity</b>	92 db 1w/1m
<b>Power, Watts</b>	50 RMS 100 Program
<b>Impedance</b>	8 Ohms
<b>Woofer</b>	8"/1.5" v.c.
<b>Tweeter</b>	1" Titanium Dome
<b>Tuning</b>	10" passive radiator
<b>Dimensions HxWxD</b>	23.625" x 23.625" x 10"
<b>Weight</b>	24lbs



**8081-CSDHP**

<b>Frequency Response</b>	48-20,000 HZ +/- 3db
<b>Sensitivity</b>	93 db 1w/1m
<b>Power, Watts</b>	125 RMS 200 Program
<b>Impedance</b>	8 Ohms
<b>Woofer</b>	8"/1.5" v.c. Cast frame
<b>Tweeter</b>	25mm horn loaded Fabric Dome
<b>Tuning</b>	10" passive radiator
<b>Dimensions HxWxD</b>	23.625" x 23.625" x 10"
<b>Weight</b>	28lbs



**12-1C**

<b>Frequency Response</b>	40-250 HZ +/- 3db
<b>Sensitivity</b>	93 db 1w/1m
<b>Power, Watts</b>	150 RMS 290 Program
<b>Impedance</b>	8 Ohms
<b>Woofer</b>	12"/2" v.c.
<b>Tuning</b>	Optimally Vented
<b>Dimensions HxWxD</b>	23.625" x 23.625" x 10"
<b>Weight</b>	32lbs



**6061-CS**

<b>Frequency Response</b>	50-20,000 HZ +/- 3db
<b>Sensitivity</b>	91 db 1w/1m
<b>Power, Watts</b>	50 RMS 100 Program
<b>Impedance</b>	8 Ohms
<b>Woofer</b>	6.5"/1.5" v.c.
<b>Tweeter</b>	1" Titanium Dome
<b>Tuning</b>	8" passive radiator
<b>Dimensions HxWxD</b>	23.625" x 23.625" x 4"
<b>Weight</b>	21lbs



**8081-CS**

<b>Frequency Response</b>	48-20,000 HZ +/- 3db
<b>Sensitivity</b>	92 db 1w/1m
<b>Power, watts</b>	50 RMS 100 Program
<b>Impedance</b>	8 Ohms
<b>Woofer</b>	8"/1.5" v.c.
<b>Tweeter</b>	1" Titanium Dome
<b>Tuning</b>	10" passive radiator
<b>Dimensions HxWxD</b>	23.625" x 23.625" x 5.5"
<b>Weight</b>	24lbs



**8081-CSHP**

<b>Frequency Response</b>	45-20,000 HZ +/- 3db
<b>Sensitivity</b>	93 db 1w/1m
<b>Power, Watts</b>	125 RMS 200 Program
<b>Impedance</b>	8 Ohms
<b>Woofer</b>	8"/1.5" v.c. Cast frame
<b>Tweeter</b>	25mm horn loaded Fabric Dome
<b>Tuning</b>	10" passive radiator
<b>Dimensions HxWxD</b>	23.625" x 23.625" x 5.5"
<b>Weight</b>	28lbs

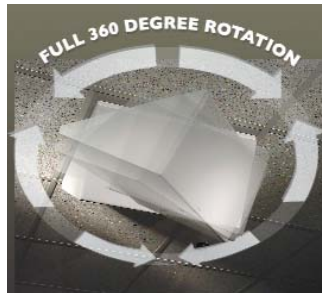
# KSI 2x2 Ceiling Mount Loudspeakers

SERIES III



**6061-CSD**

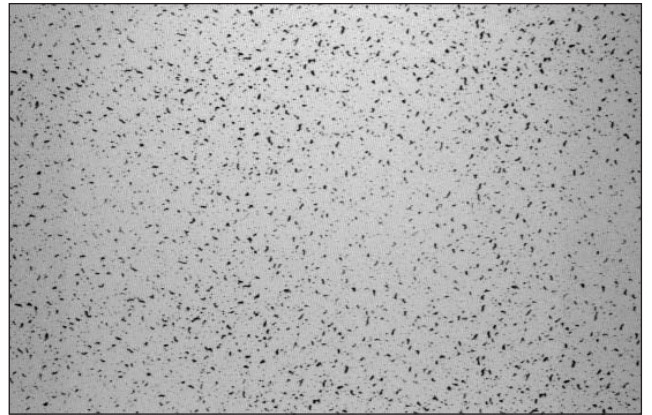
<b>Frequency Response</b>	50-20,000 HZ +/- 3db
<b>Sensitivity</b>	91 db 1w/1m
<b>Power, Watts</b>	50 RMS 100 Program
<b>Impedance</b>	8 Ohms
<b>Woofer</b>	6.5"/1.5" v.c.
<b>Tweeter</b>	1" Titanium Dome
<b>Tuning</b>	8" passive radiator
<b>Dimensions HxWxD</b>	23.625" x 23.625" x 8"
<b>Weight</b>	23lbs



**8081-CSD-SW**

<b>Frequency Response</b>	48-20,000 HZ +/- 3db
<b>Sensitivity</b>	92 db 1w/1m
<b>Power, Watts</b>	50 RMS 100 Program
<b>Impedance</b>	8 Ohms
<b>Woofer</b>	8"/1.5" v.c.
<b>Tweeter</b>	1" Titanium Dome
<b>Tuning</b>	10" passive radiator
<b>Dimensions HxWxD</b>	23.625" x 23.625" x 10"
<b>Weight</b>	26lbs

PATTERNED GRILLE



KSI now offers our CS series of ceiling loudspeakers in a patterned grille to blend in with your ceiling tiles.

The patterned grille is offered as a optional item that may be ordered with the purchase of a loudspeaker or ordered as a new grille for existing installations.

Our standard patterned grille blends with Armstrong tile number 948.



Can you find the KSI patterned grille?

Please note: KSI patterned CS loudspeaker grilles are designed to blend with existing patterned ceiling tiles. Existing ceiling tiles you may have may have discoloration, dirt, fading, different batches or other signs of age. Therefore, no guarantee can be made that an exact match will occur.



**101-CSHP**

<b>Frequency Response</b>	42-20,000 HZ +/- 3db
<b>Sensitivity</b>	94 db 1w/1m
<b>Power, Watts</b>	125 RMS 200 Program
<b>Impedance</b>	8 Ohms
<b>Woofer</b>	10"/2" v.c. Cast frame
<b>Tweeter</b>	25mm horn loaded Fabric Dome
<b>Tuning</b>	Optimally Vented
<b>Dimensions HxWxD</b>	23.625" x 23.625" x 7"
<b>Weight</b>	30lbs



**801-C**

<b>Frequency Response</b>	55-20,000 HZ +/- 4db
<b>Sensitivity</b>	92 db 1w/1m
<b>Power, watts</b>	40 RMS 80 Program
<b>Impedance</b>	8 Ohms
<b>Woofer</b>	8"/1" v.c.
<b>Tweeter</b>	1" Mylar Dome
<b>Tuning</b>	none
<b>Dimensions HxWxD</b>	23.625" x 23.625" x 3.5"
<b>Weight</b>	12lbs



**FIRE Retardant**

All Series III ceiling loudspeakers are also available fabricated from UL listed fire retardant particle board. Typical lead time for KSI's FR loudspeakers is 1 week.

www.ksipro.com